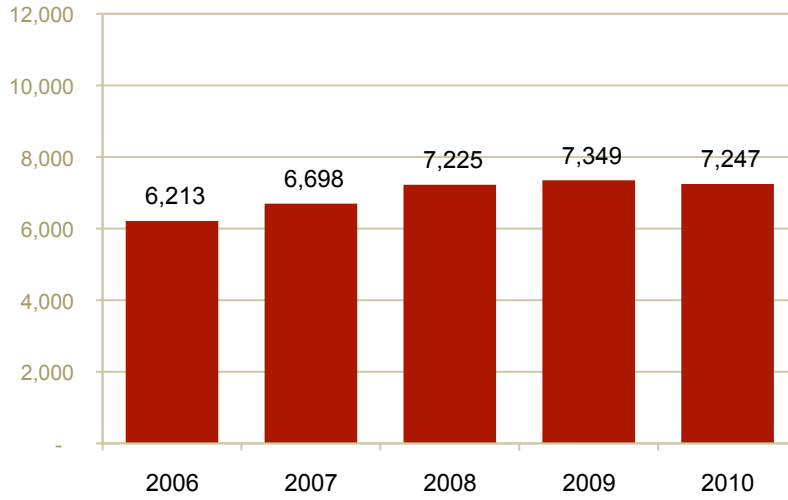


SEEK OVERVIEW 2006-2010 Gallatin County

Total SEEK Funding Per Pupil



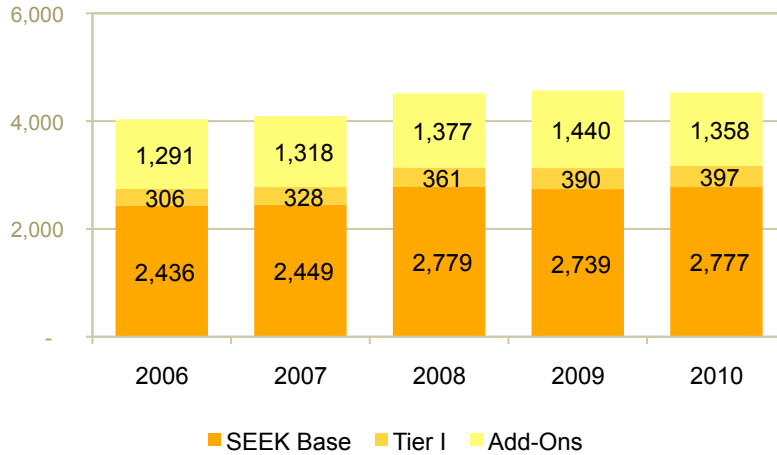
SEEK is Kentucky's main funding formula for P-12 public education, combining state and local dollars

This overview shows dollar figures with no adjustment for inflation.

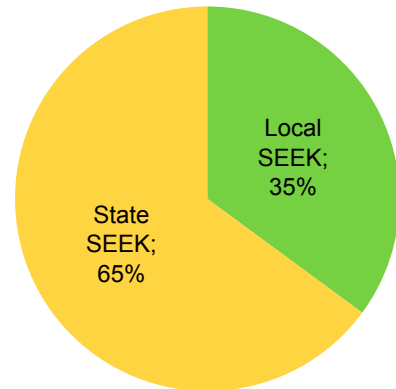
CBE plans to offer versions of this report for each district and for the state as a whole at www.kycbe.com.

Inflation-adjusted versions will also be available to show the real change in buying power available for Kentucky education.

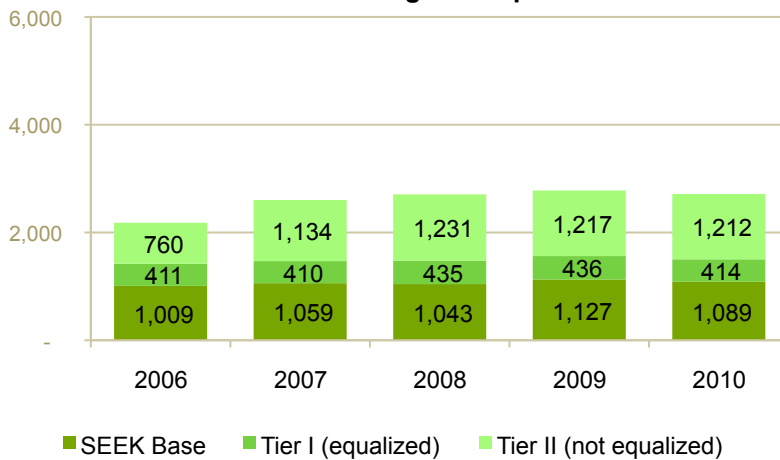
State Funding Per Pupil



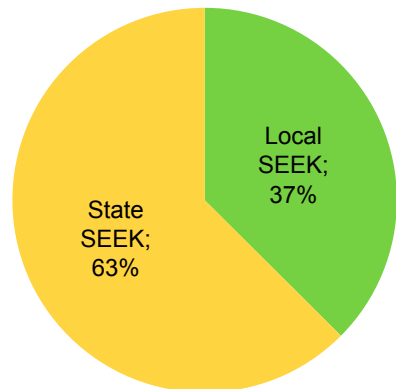
2006 State and Local Shares of SEEK Funding



Local Funding Per Pupil



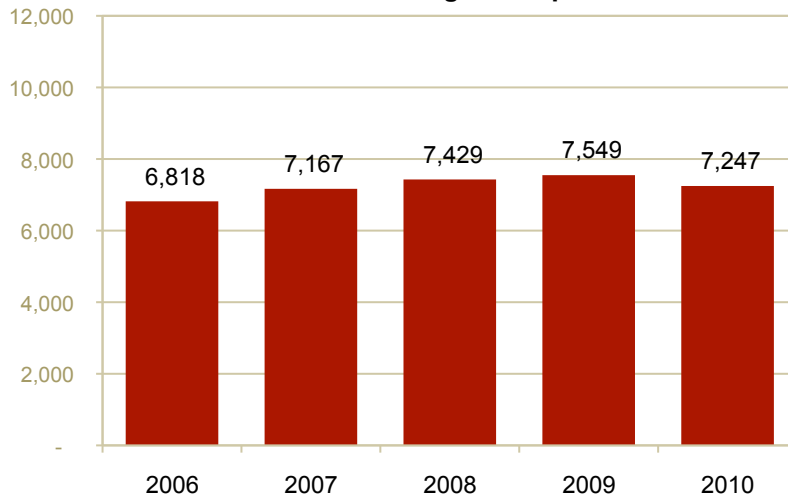
2010 State and Local Shares of SEEK Funding



SEEK OVERVIEW 2006-2010 • INFLATION ADJUSTED VERSION

Gallatin County

Total SEEK Funding Per Pupil



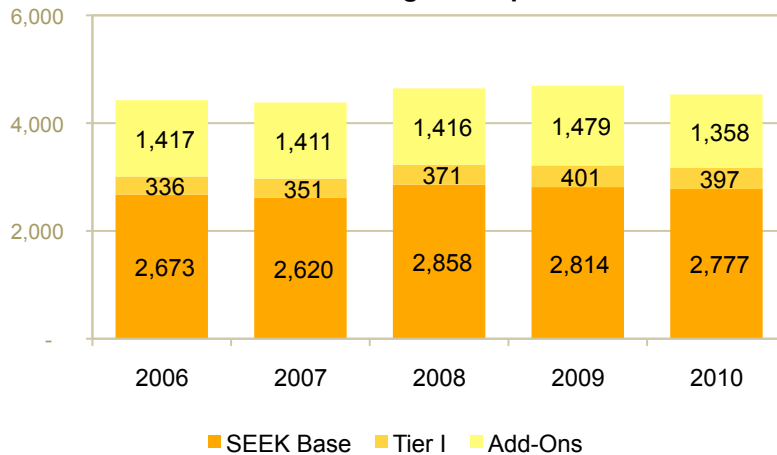
SEEK is Kentucky's main funding formula for P-12 public education, combining state and local dollars

This overview shows inflation-adjusted figures in December 2009 dollars.

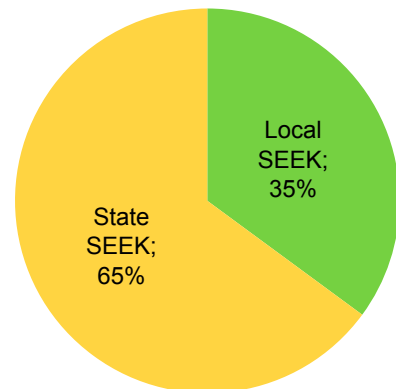
CBE plans to offer versions of this report for each district and for the state as a whole at www.kycbe.com.

Versions without the inflation adjustment will also be available.

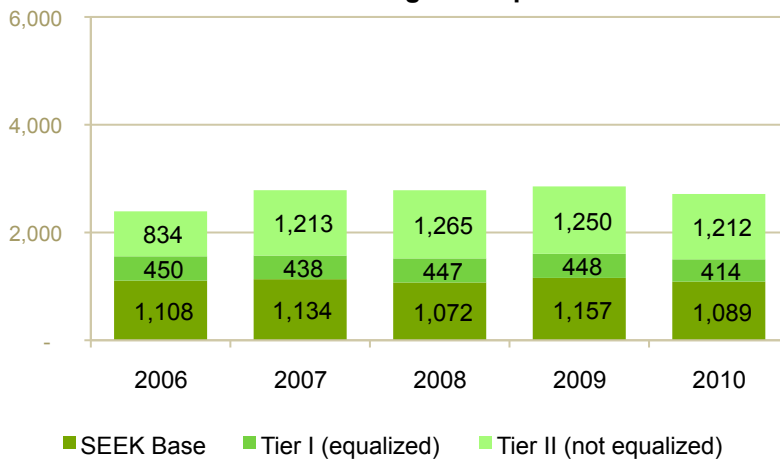
State Funding Per Pupil



2006 State and Local Shares of SEEK Funding



Local Funding Per Pupil



2010 State and Local Shares of SEEK Funding

